

# TECH PACK

***BROKEN  
SOCIETY***

BRAND : BROKEN SOCIETY

SEASON : FW23

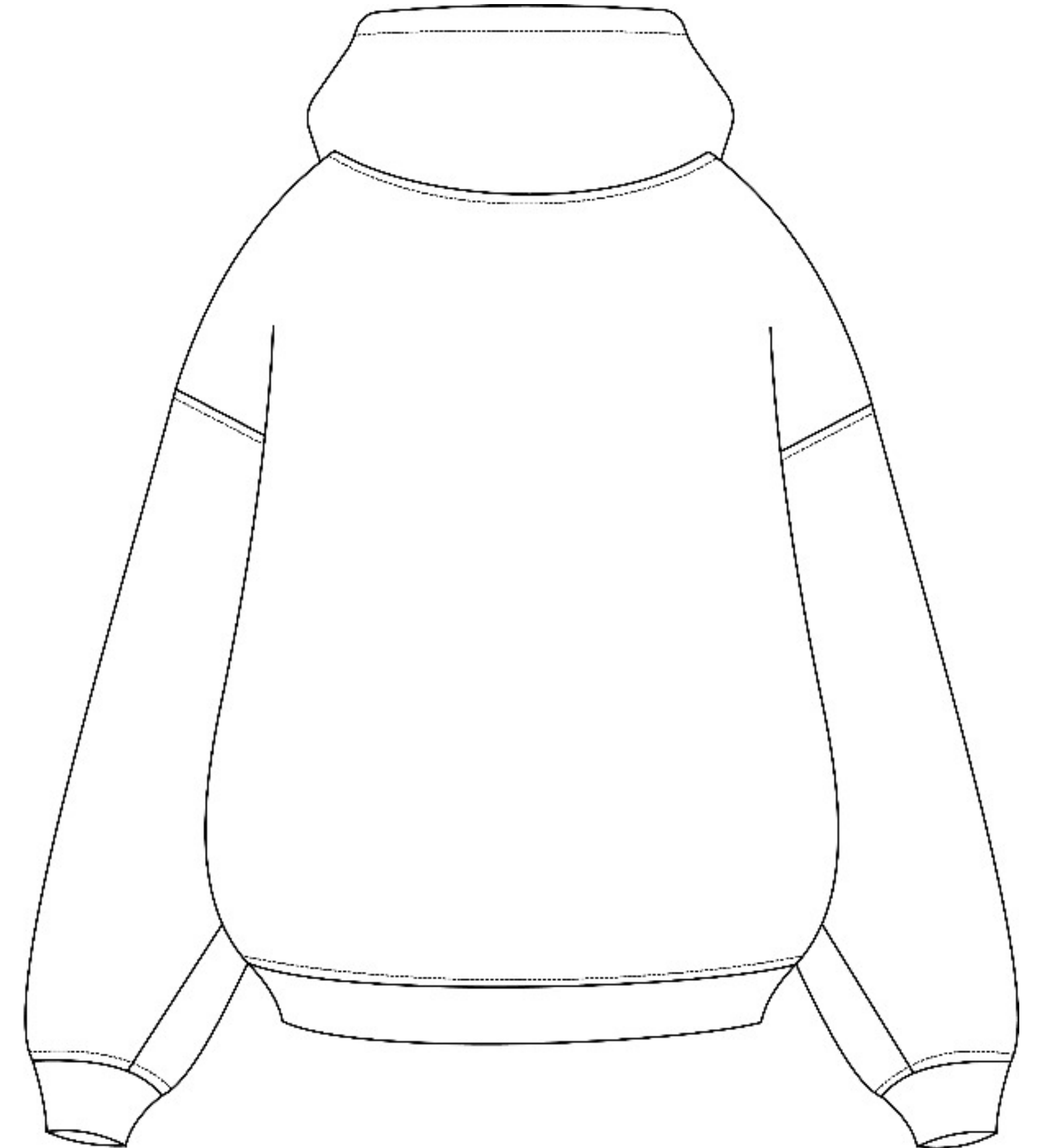
PRODUCT CATEGORY : LADIES HOODIE

STYLE REF: LADIES HOODIES

FABRIC : 100% ORGANIC COTTON 520 GSM

Any illegal reproduction of this content will result in immediate legal action.  
These Details are copyrighted under the name of BROKENSOCIETY©.

## Technical Drawing



# TECH PACK

**BROKEN  
SOCIETY**

BRAND : BROKEN SOCIETY

SEASON : FW23

PRODUCT CATEGORY : LADIES HOODIE

STYLE REF: LADIES HOODIES

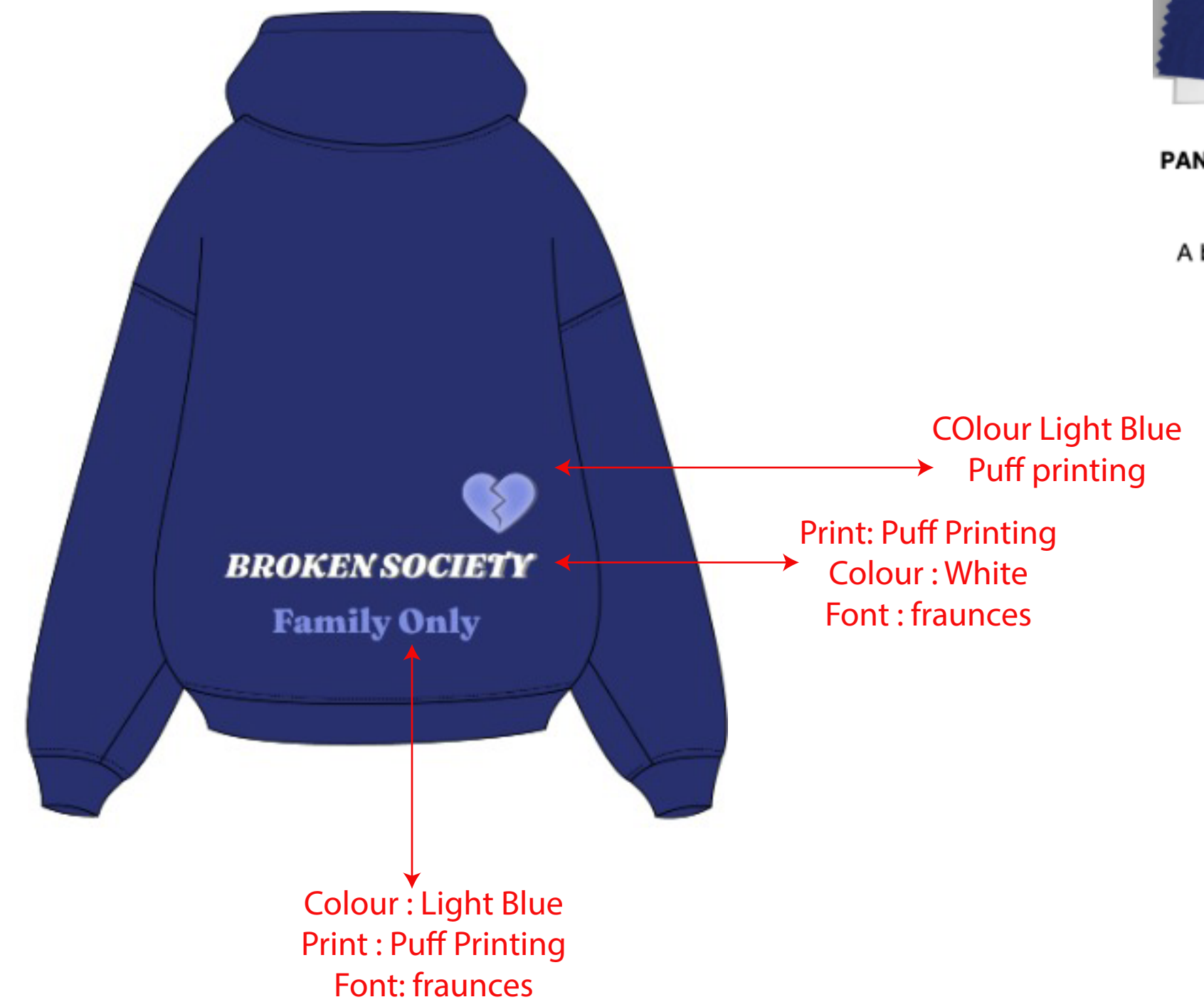
FABRIC : 100% ORGANIC COTTON 520 GSM

Any illegal reproduction of this content will result in immediate legal action.  
These Details are copyrighted under the name of BROKENSOCIETY©.

## Color Options

FRONT

BACK



**PANTONE 19-3954**  
*Bluing*  
A brisk inky blue

# TECH PACK

**BROKEN  
SOCIETY**

BRAND : BROKEN SOCIETY

SEASON : FW23

PRODUCT CATEGORY : LADIES HOODIE

STYLE REF: LADIES HOODIES

FABRIC : 100% ORGANIC COTTON 520 GSM

Any illegal reproduction of this content will result in immediate legal action.  
These Details are copyrighted under the name of BROKENSOCIETY©.

## Color Options



# TECH PACK

**BROKEN  
SOCIETY**

BRAND : BROKEN SOCIETY

SEASON : FW23

PRODUCT CATEGORY : LADIES HOODIE

STYLE REF: LADIES HOODIES

FABRIC : 100% ORGANIC COTTON 520 GSM

Any illegal reproduction of this content will result in immediate legal action.  
These Details are copyrighted under the name of BROKENSOCIETY©.

## Color Options

FRONT



BACK



PANTONE  
18-0527 TCX  
Olive Branch

# TECH PACK

***BROKEN  
SOCIETY***

BRAND : BROKEN SOCIETY

SEASON : FW23

PRODUCT CATEGORY : LADIES HOODIE

STYLE REF: LADIES HOODIES

FABRIC : 100% ORGANIC COTTON 520 GSM

Any illegal reproduction of this content will result in immediate legal action.  
These Details are copyrighted under the name of BROKENSOCIETY©.

## Trims

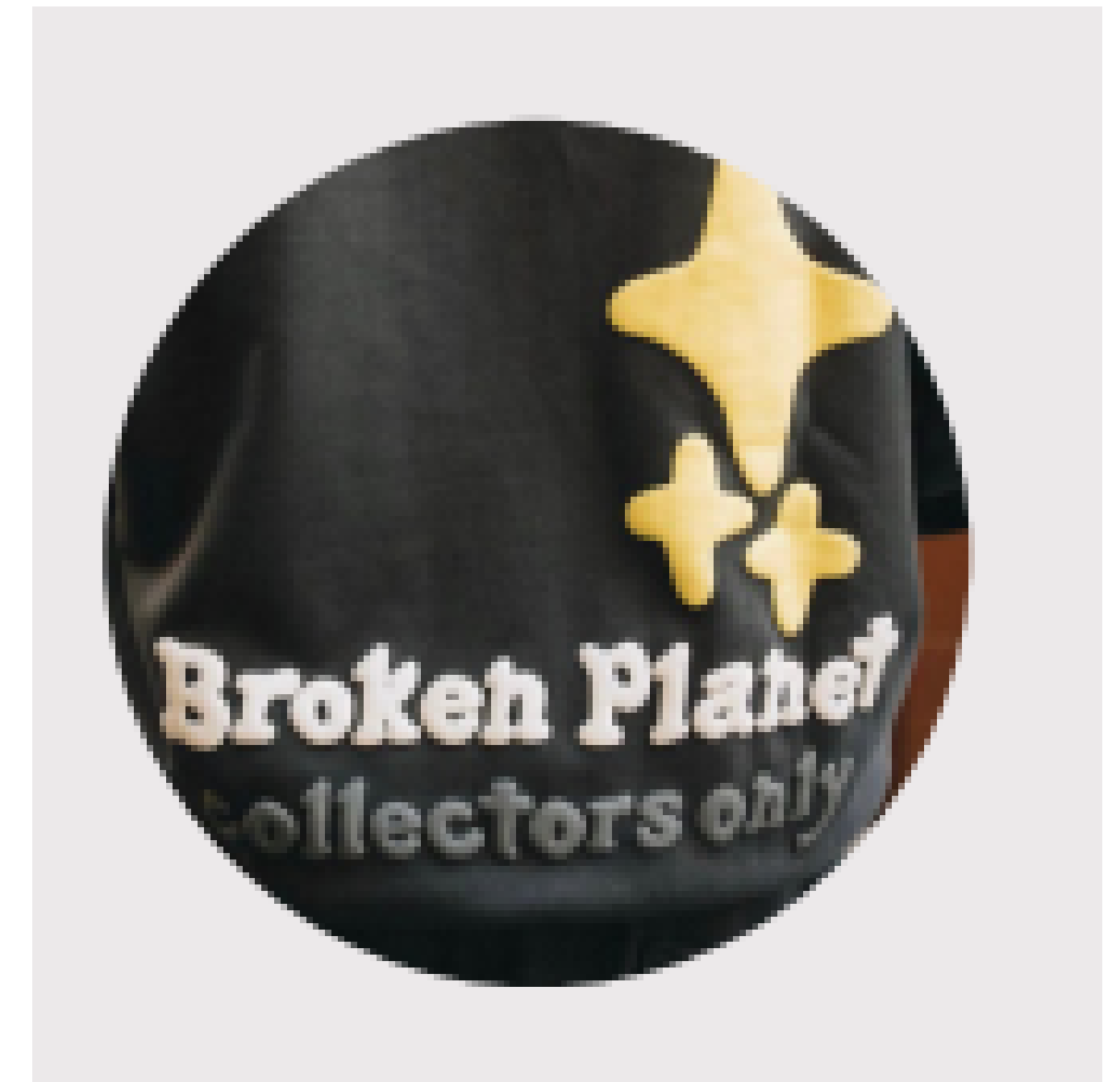


**hidden pockets**

Side Pockets msut be hidden



Sleevs embroidery msut be in white for all colours



Puff Printing Examples

# TECH PACK

**BROKEN  
SOCIETY**

BRAND : BROKEN SOCIETY

SEASON : FW23

PRODUCT CATEGORY : LADIES HOODIE

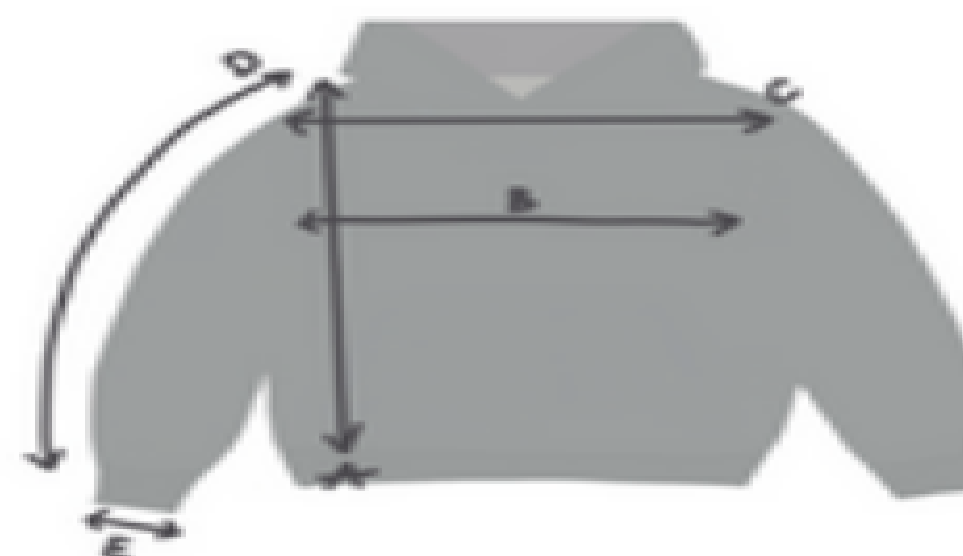
STYLE REF: LADIES HOODIES

FABRIC : 100% ORGANIC COTTON 520 GSM

Any illegal reproduction of this content will result in immediate legal action.  
These Details are copyrighted under the name of BROKENSOCIETY©.

## Size Chart / Specs

## SIZING GUIDE



## HOODIES AND QUARTER ZIP JUMPERS

SIZES	XXS	XS	S	M	L	XL	XXL	XXXL
A FULL LENGTH (CM)	62	64	66	68	70	72	74	76
B 1/2 CHEST (CM)	59	61	63	65	67	68	70	72
C SHOULDERS LENGTH (CM)	58	59.5	61	62.5	64	65.5	67	68.5
D SLEEVE LENGTH (CM)	60	61.5	63	64.5	66	67.5	69	70.5
E 1/2 SLEEVE WIDTH (CM)	7	7.5	8	8.5	9	9.5	10	10.5